

~~TOP SECRET~~

Copy 61  
6 Pages

NPIC/B-36/61  
October 1961

APPROVED FOR  
RELEASE DATE:  
16-Jul-2011

PHOTOGRAPHIC INTERPRETATION BRIEF



# ICBM LAUNCH COMPLEX

## ITATKA, USSR



ARMY



NAVY



AIR FORCE



CIA

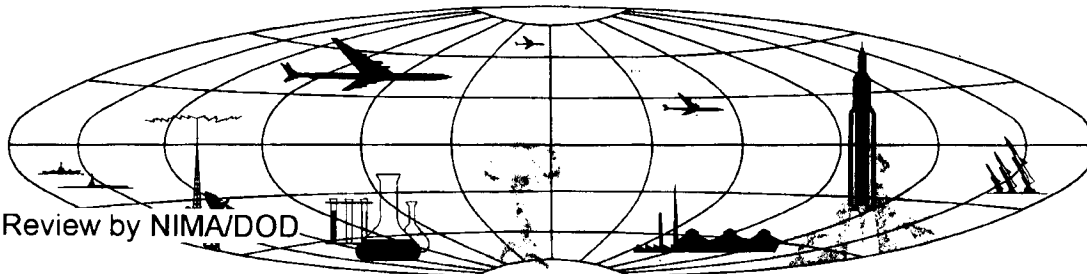


Handle via TALENT - KEYHOLE Control Only

### WARNING

This document contains classified information affecting the national security of the United States within the meaning of the espionage laws U. S. Code Title 18, Sections 793 and 794. The law prohibits its transmission or the revelation of its contents in any manner to an unauthorized person, as well as its use in any manner prejudicial to the safety or interest of the United States or for the benefit of any foreign government to the detriment of the United States. It is to be seen only by U. S. personnel especially indoctrinated and authorized to receive TALENT-KEYHOLE information. Its security must be maintained in accordance with KEYHOLE and TALENT regulations.

NATIONAL PHOTOGRAPHIC INTERPRETATION CENTER



Declass Review by NIMA/DOD

~~TOP SECRET~~

HR70-14

~~TOP SECRET CHESS RUFF~~

NPIC/B-36/61

## ICBM LAUNCH COMPLEX, ITATKA, USSR

An ICBM launch complex under construction has been identified about 35 nautical miles (nm) northeast of Tomsk on KEYHOLE photography dated  September 1961. To date it is the fourth deployed ICBM launch complex identified from KEYHOLE photography. The others are near Yur'ya 1/, 2/, Yoshkar-Ola 3/, and Verkhnyaya Salda 4/; a possible ICBM site is near Kostroma 5/ (Figure 1).

The complex (Figure 2) consists of a Yur'ya-type launch area (56-58N 85-33E) and a road- and rail-served complex support facility (56-50N 85-36E). The complex support facility is located north of and adjacent to the town of Itatka, which is on the rail line midway between Tomsk and Asino.

25X1

There was no evidence of the complex on TALENT mission  of August 1957, or as late as KEYHOLE mission  of August 1960, both of which are cloud free in this area. A study of the August 1960 and September 1961 coverages indicates that in 12 months the construction of the complex had progressed to a point where a launch area was identifiable. Accordingly, based on comparative coverage and construction status of this and other complexes, this configuration of ICBM launch complexes has been in the process of being deployed throughout the Soviet Union since mid 1959 or early 1960.

No SAM sites are noted defending the complex although cloud cover in the area might preclude their identification. In addition, the early stage of construction could mean that a SAM defense has not yet been deployed.

The launch area (Figure 3) conforms to the same basic configuration as noted at launch areas at other deployed ICBM complexes. The early stage of construction and cloud haze preclude identification of individual items. However, the separation between launch pad areas is about 1,000 feet, the orientation is approximately 10 degrees from north, the center road is offset, and clearings for missile-ready buildings are visible.

- 1 -

~~TOP SECRET CHESS RUFF~~

USSR



TOP SECRET CHESS RUFF

TOP SECRET CHESS RUFF

NPIC/B-36/61

29739 3-61

FIGURE 1. LOCATION OF ITATKA LAUNCH COMPLEX IN RELATION TO OTHER ICBM LAUNCH COMPLEXES.

~~TOP SECRET CHESS RUFF~~

NPIC/B-36/61

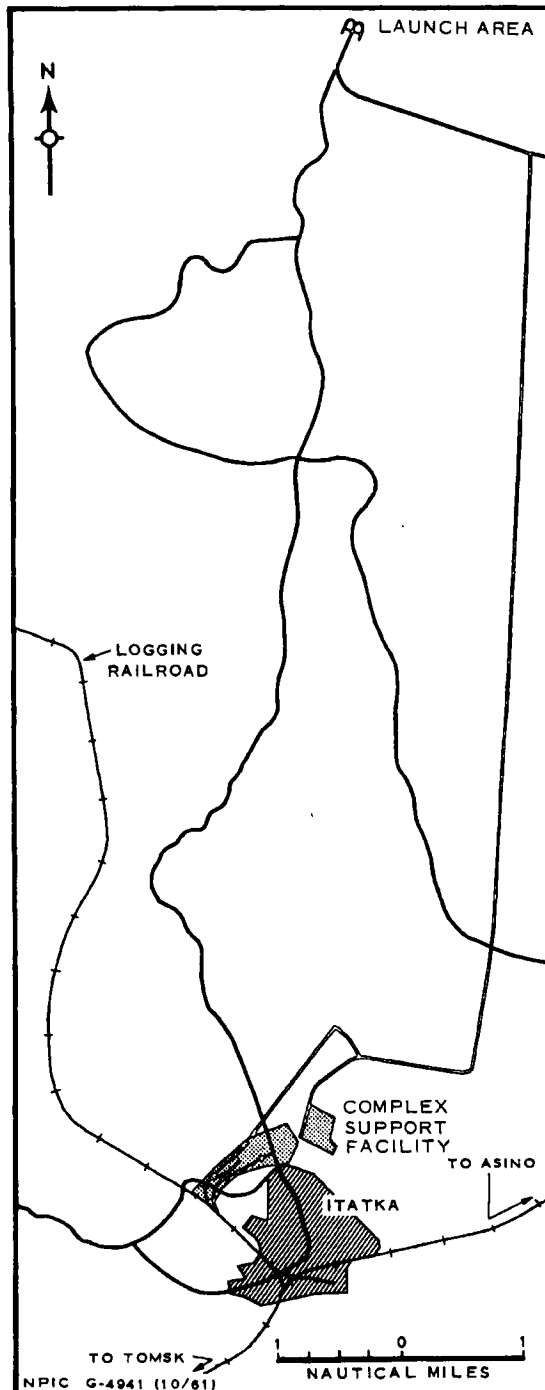


FIGURE 2. ICBM LAUNCH COMPLEX, ITATKA USSR.  
The red overprint shows those items new since Aug. 1960

Scarring about 3,000 feet to the rear of the launch area indicates the probable location of a launch support area. The launch area is connected to the complex support facility by an improved road, new since 1960. At a point where this road turns west to serve the launch area, a short eastward extension is visible, an indication that other launch areas are planned in that general direction.

The complex support facility (Figure 4) consists of an incomplete barracks area containing at least 20 structures and a rail-served area of activity which may contain at least four terminal rail spurs, open and covered storage, and a possible rail-to-road transfer point. The rail line serving this facility conveniently utilizes a portion of a logging railroad which was observed on photography of August 1957.

~~TOP SECRET CHESS RUFF~~

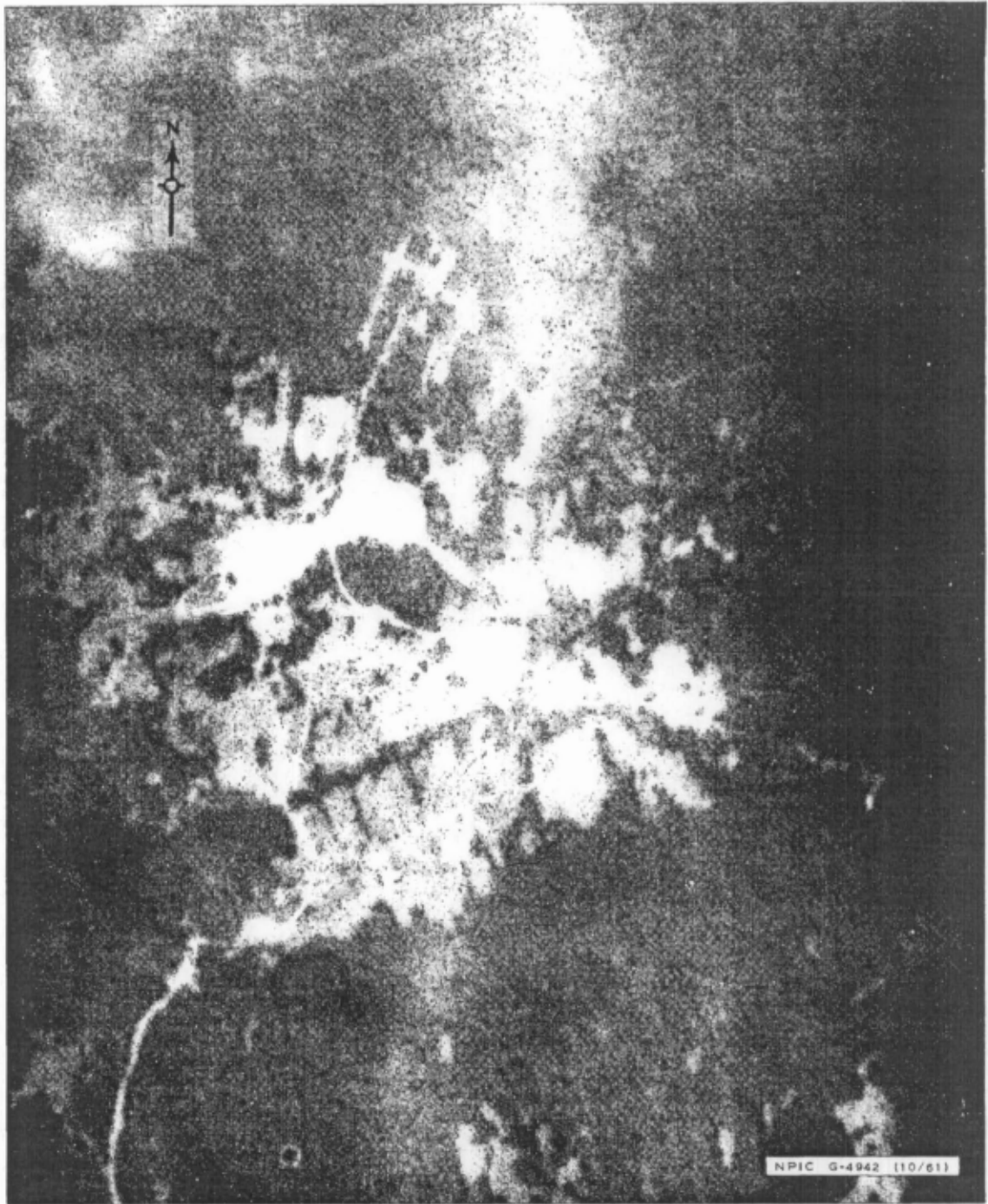


FIGURE 3. LAUNCH AREA. (September 1961)

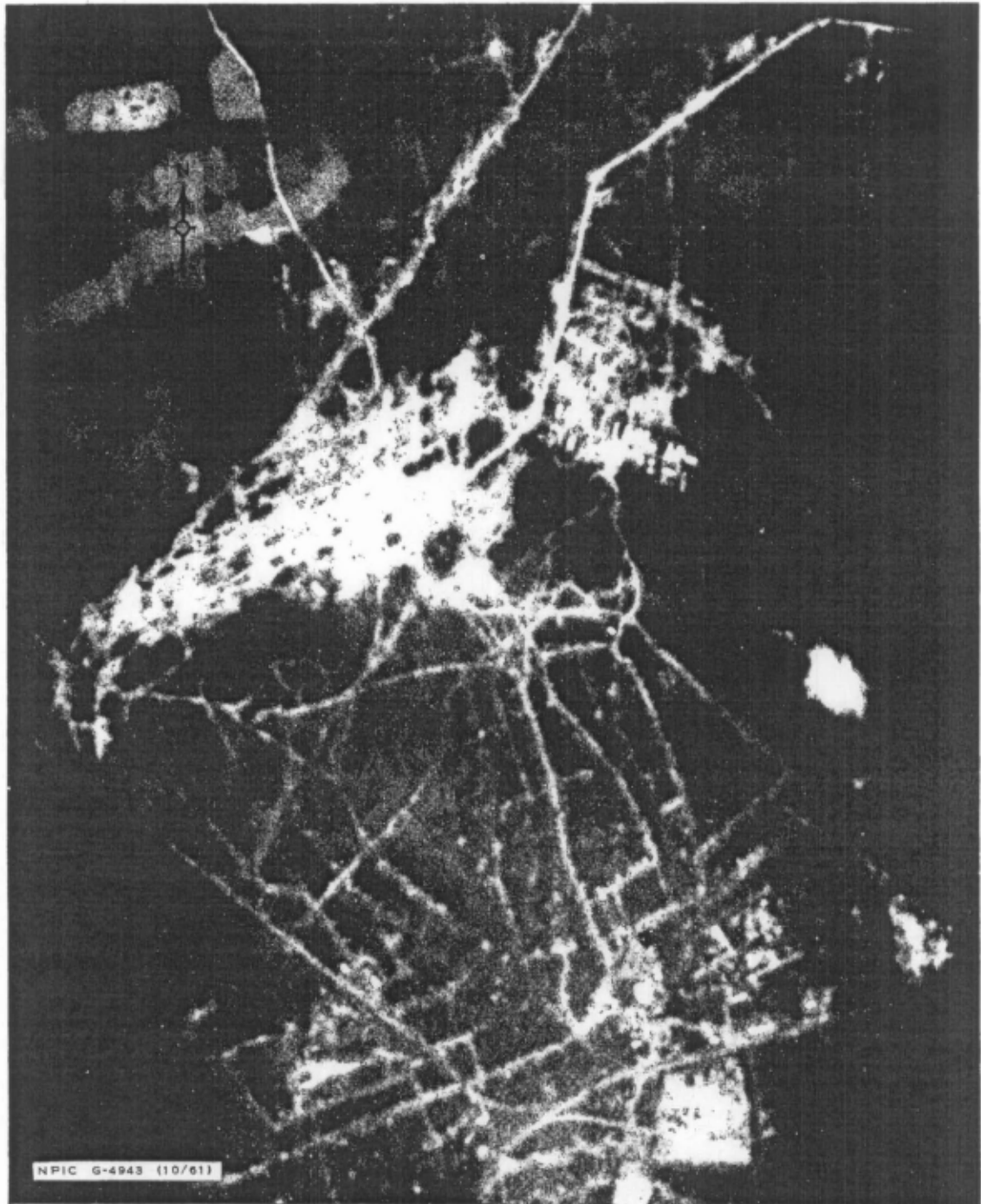


FIGURE 4. COMPLEX SUPPORT FACILITY AND VILLAGE OF ITATKA. (September 1961)

~~TOP SECRET CHESS RUFF~~

NPIC/B-36/61

## REFERENCES

## PHOTOGRAPHY

<u>Mission</u>	<u>Date</u>	<u>Pass/Camera</u>	<u>Frames</u>	<u>Classification</u>
	Sep 61 Aug 60 Aug 57			TSR TSR TSC

## CHARTS

SAC. US Air Target Chart, Series 200, Sheet 0158 19-A, 1st ed, May 59, scale 1:200,000 (C)

ACIC. WAC 158, 4th ed, Nov 51, scale 1:1,000,000 (U)

## DOCUMENTS

1. NPIC. R-1/61 ICBM Launch Complex, Yur'ya, USSR, Jul 61 (TSCR)
2. NPIC. B-21/61 Operational Support Analysis, ICBM Launch Complex, Yur'ya, USSR, Aug 61 (TSCR)
3. NPIC. R-2/61 ICBM Launch Complex, Yoshkar-Ola, USSR, Jul 61 (TSCR)
4. NPIC. B-30/61 ICBM Launch Complex, Verkhnyaya Salda, USSR, Oct 61 (TSCR)
5. NPIC. B-18/61 Possible ICBM Launch Site Near Kostroma, USSR, Aug 61 (TSCR)

~~TOP SECRET CHESS RUFF~~